


DEPARTMENT OF MIDDLE-SECONDARY EDUCATION
AND INSTRUCTIONAL TECHNOLOGY

INTRODUCTION TO LIVETEXT


FALL 2009
Mary Ariail, Ph.D.
mariaf@gsu.edu
(404) 413-8382



LiveText Requirement

Students enrolled in any program in MSIT must have an active LiveText account. If you do not have an account, you can obtain a key code request form and information for using LiveText at the following web address:


<http://msit.gsu.edu/4785.html>.

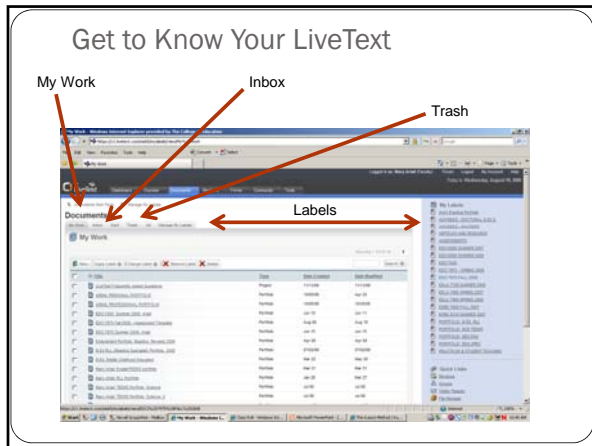


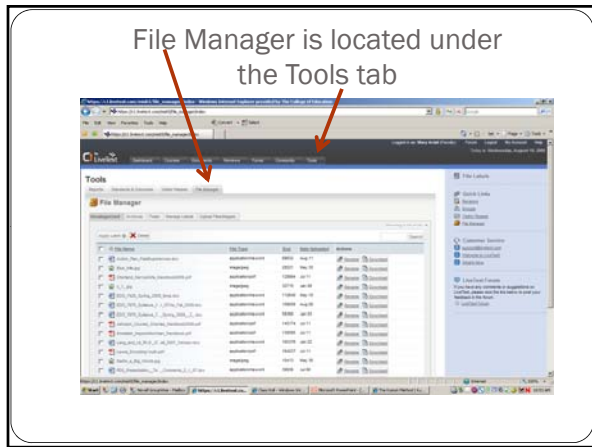
Using LiveText

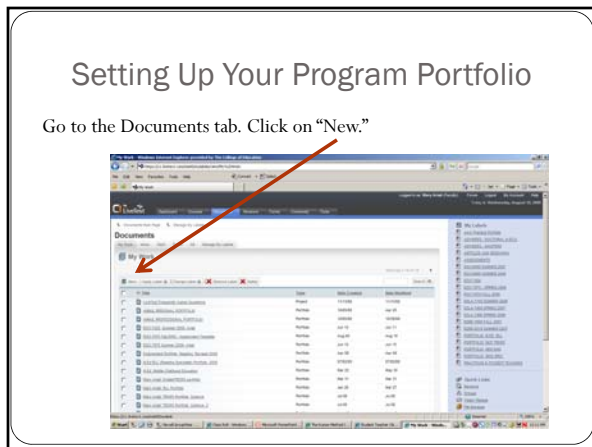
You will use your LiveText account in a number of ways. The two that you should know about very early in your program are

- your program portfolio, and
- courses that your instructors teach through the LiveText C1 course management system.







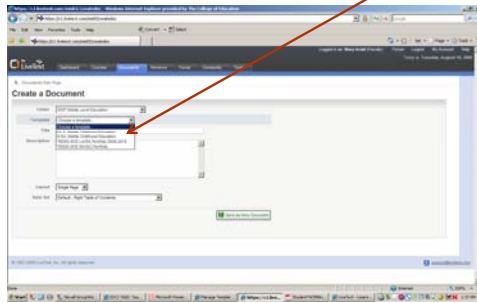


Select Your Unit

From the folder, select the general category for your unit from the drop-down menu.



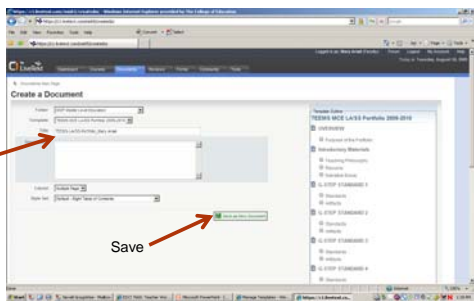
Select the Template for Your Program

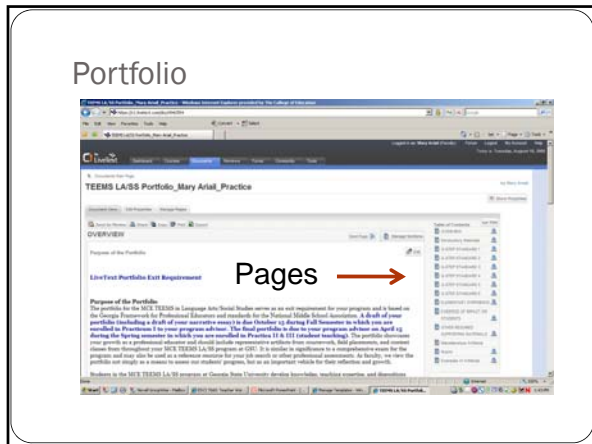


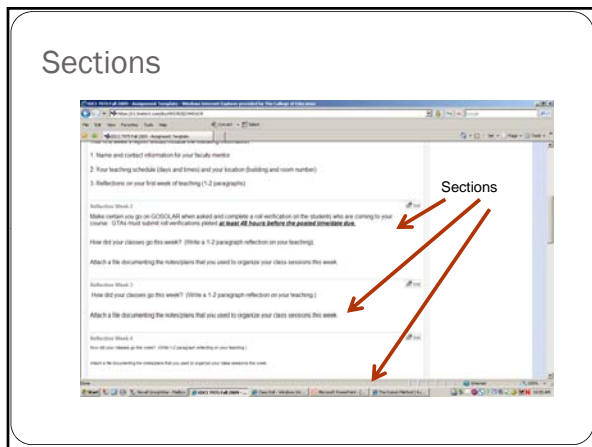
Name Your Document and Save

Give your document a name

Save



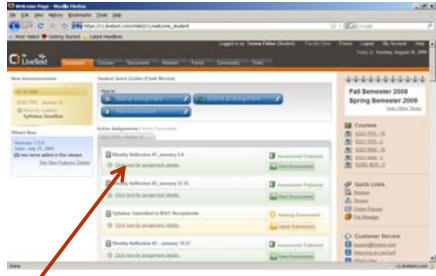




Using LiveText in Your Courses

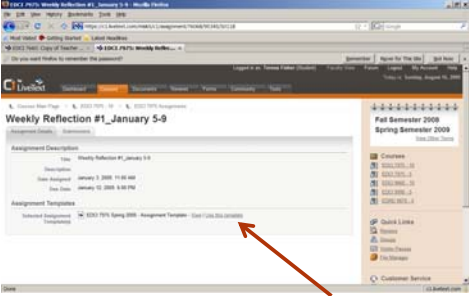
- Through your LiveText course, you can enter, edit, revise, and submit assignments.
- When you log in to LiveText, the first thing you will see is the dashboard with the assignments that have been developed for your course.

The Dashboard



To view the assignment, select "Click here for assignment details."

Assignment Details

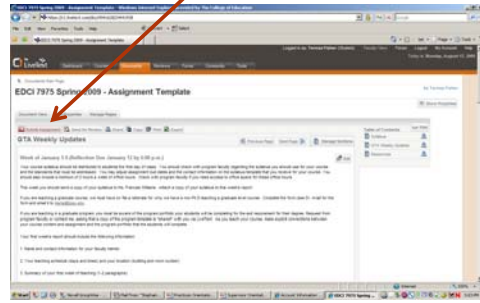


If the assignment requires a template, you will select "Use this template."

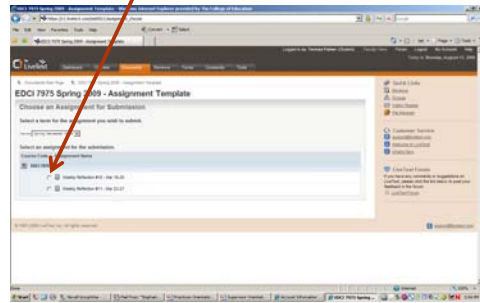
Important!

- If your instructor uses a course template, s/he will usually put all assignments on the same template.
- Click on "Use this template" only one time. When you click on this button, a new LiveText document will be created in your account.
- If you click on "Use This Template" again, a new document will be created (not a good idea!).
- The next time you need to use the template, you will find it in Documents/My Work.

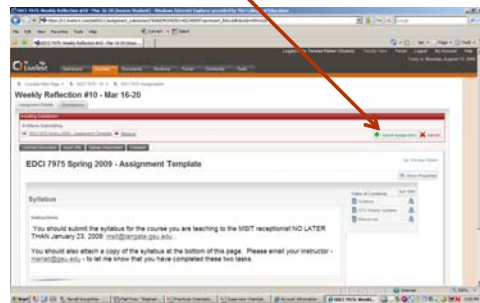
Click on Submit Assignment



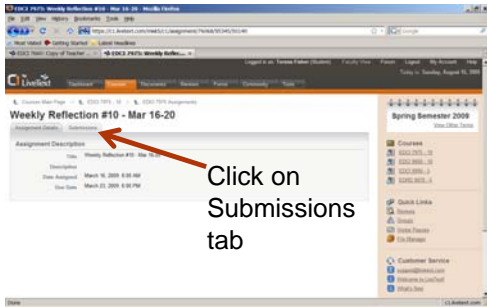
Select Assignment



Submit Assignment

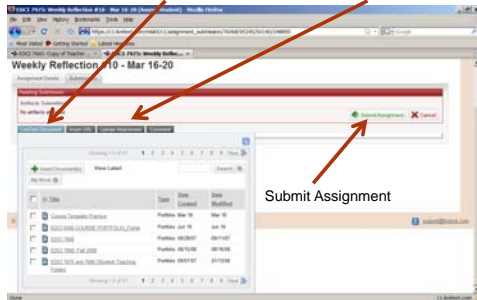


If there is no template . . .



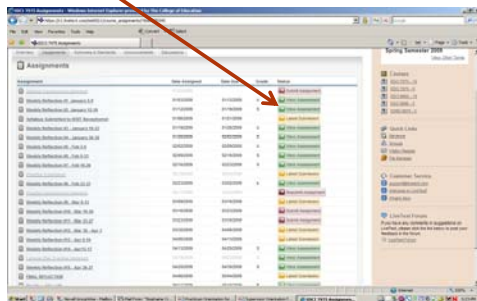
Click on
Submissions
tab

Select LiveText document or attach file

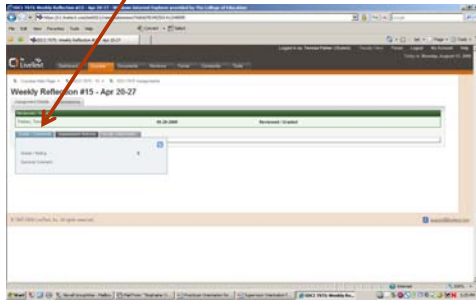


Submit Assignment

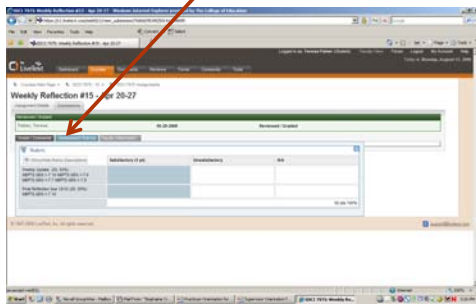
View Assessments



Grade/Comments



Assessment Rubric



To Access Information Online:

Go to the MSIT homepage and
find the link to LiveText:

[Http://msit.gsu.edu/4785.html](http://msit.gsu.edu/4785.html)
